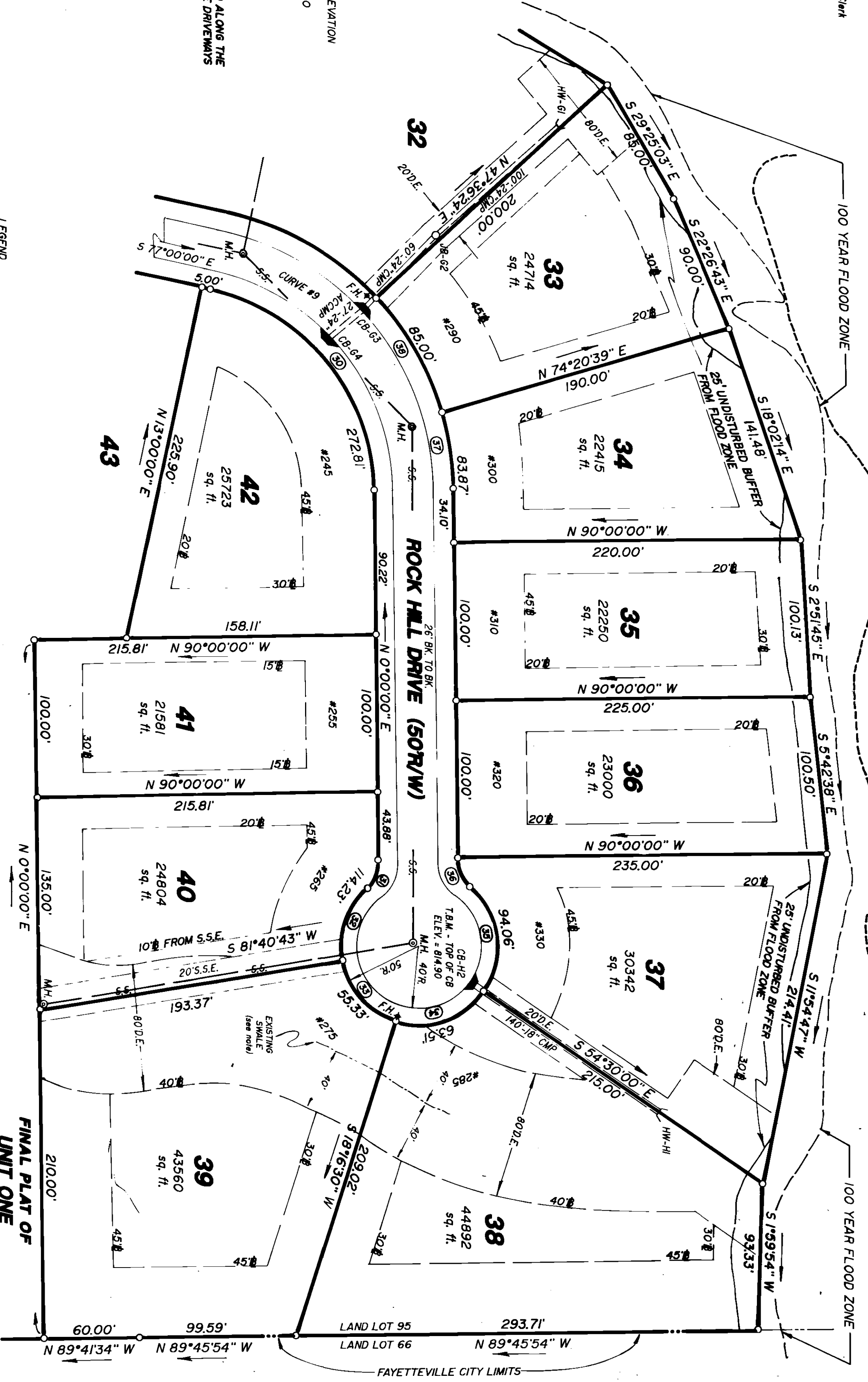


GEORGIA, FAYETTE COUNTY
 Filed and Registered this 21st day
 of October, 1997, at 11:28 A.M.
 Book 30, Page 3

W. B. Boyd
 Clerk

LOCATION OF WETLANDS AS DELINEATED BY
 UNITED CONSULTING GROUP, LTD. 12/7/96



NOTE: MINIMUM FINISHED FLOOR ELEVATION
 FOR LOTS 32 - 38 = 798.0
 T.B.M. TOP OF CB-H2 ELEV. = 814.90

NOTE: A 36" PIPE IS TO BE PLACED ALONG THE
 EXISTING SWALE AND UNDER THE DRIVEWAYS
 OF LOTS 39 AND 38.

R/W CURVE DATA

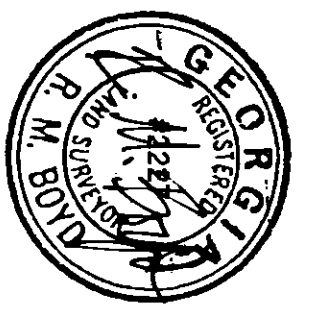
NO.	ARC	CHORD	BEARING	RADIUS	LOT
30	177.59'	164.53'	S 38°30'00" E	132.15'	42
31	21.03'	20.41'	S 24°05'41" W	26.00'	40
32	49.32'	47.34'	S 19°56'03" W	50.00'	40
33	55.33'	52.55'	S 40°01'24" E	50.00'	39
34	63.51'	59.32'	N 71°53'18" E	50.00'	38
35	73.03'	66.71'	N 06°20'41" W	50.00'	37
36	21.03'	20.41'	N 24°05'41" W	26.00'	37
37	49.77'	48.62'	N 74°49'39" W	50.00'	34
38	65.00'	64.23'	N 29°01'29" W	102.15'	33

Δ CURVE DATA

NO	TANG.	ARC	DELTA	RAD.
9	126.00'	211.19'	77°00'00"	157.15'

LEGEND

- CB - CATCH BASIN
- JB - JUNCTION BOX
- HW - HEADWALL
- CMP - CORRUGATED METAL PIPE
- D.E. - DRAINAGE EASEMENT
- S.S.E. - SANITARY SEWER EASEMENT
- Δ - BUILDING LINE
- M.H. - MANHOLE
- S.S. - SANITARY SEWER
- F.H. - FIRE HYDRANT
- M.F.F.E. - MINIMUM FINISHED FLOOR ELEVATION
- I.P.F. - IRON PIN FOUND
- I.P.S. - IRON PIN SET



MAGNOLIA RIDGE
 LAND LOTS 95 & 96 5TH DISTRICT
 FAYETTE COUNTY, GEORGIA

GRAPHIC SCALE
 0 50' 100' 150' 200'

9/29/97

R. M. Boyd & Associates
 Land Surveying & Engineering
 185 South Lee St.
 Fayetteville, Ga. 30214
 (770) 461-2417